

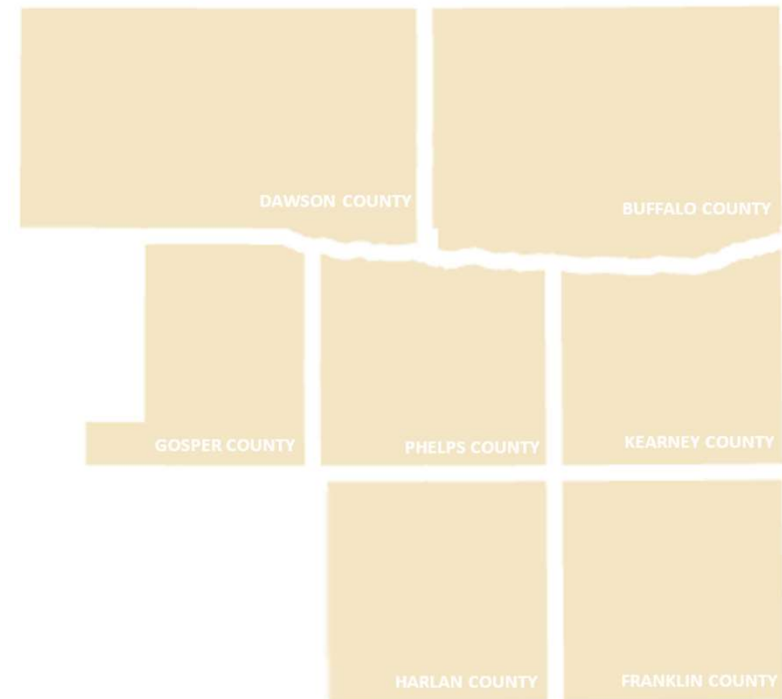


# Two Rivers Public Health Department

People, Programs, and Opportunities

# Where We Are | Two Rivers

- 7 Counties (~4,624 square miles)
- Population: 97,040
  - Buffalo: 48,863
  - Dawson: 23,886
  - Phelps: 9,296
  - Kearney: 6,585
  - Harlan: 3,452
  - Franklin: 2,985
  - Gosper: 1,973



# What We Do | Two Rivers

DiseaseSurveillance

WestNileVirus

ChronicDiseasePrevention

Tri-CitiesMedicalResponseSystem

EmergencyResponse

LifesmilesDentalProgram

Collaboratives

LeadExposure





# Where We Are | Two Rivers



**Jeremy Eschliman**  
Health Director  
[jeschliman@trphd.org](mailto:jeschliman@trphd.org)



**Glenda Fraber**  
Assistant Director  
[gfraber@trphd.org](mailto:gfraber@trphd.org)

## Our Mission

Two Rivers Public Health Department engages collaborative partners, community leaders, and the public to promote healthy lifestyles, provide preventative education, assure environmental quality, and create more healthy and safe communities for all who live within the district.

In short....

## Our Vision

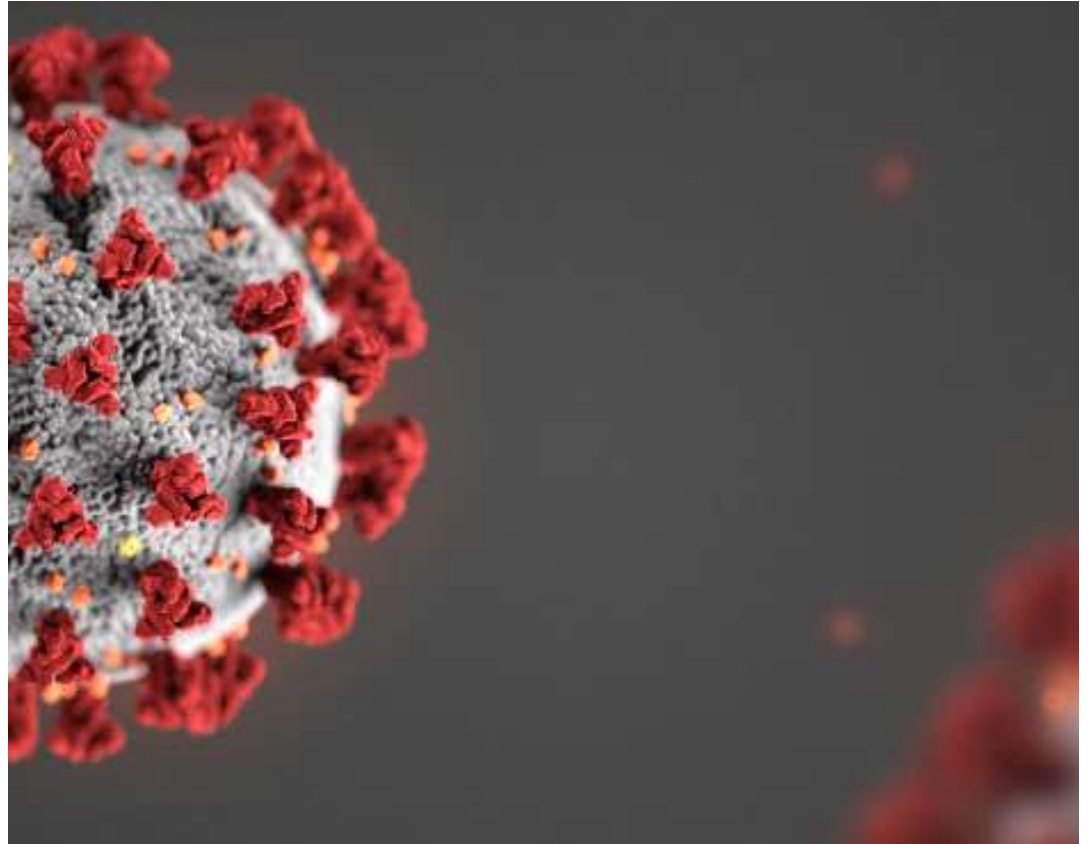
Two Rivers Public Health Department envisions a health district where all are able to safely and actively live, learn, work, and play in their communities. Two Rivers Public Health Department facilitates collaborative, partnerships, and unique approaches that educate, empower, and engage local community partners, health providers, political decision-makers, community leadership, and the public.

*Healthier communities for all*



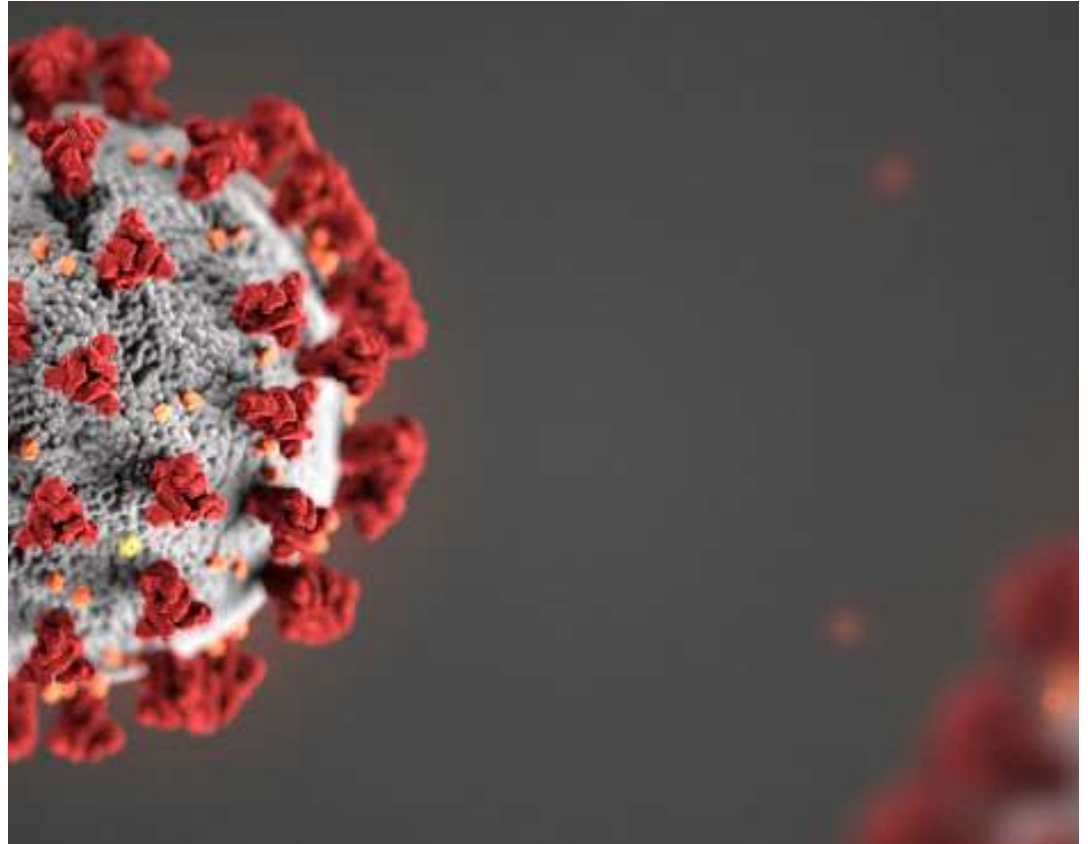
# COVID-19

- A "novel" coronavirus is what we call a new coronavirus not previously identified
- COVID-19 is a viral respiratory illness
- Can be spread person-to-person
- Individuals most at risk at this time are healthcare workers, older adults, and anyone with underlying conditions
- The CDC states that currently there is NO evidence that children are more susceptible to contracting the virus (1)



# COVID-19

- Formally named COVID-19 on 2/11/20
- Taxonomic Name is severe acute respiratory coronavirus 2 (SARS CoV-2)
- There is no known source of this virus at this time, but we know the virus was first detected in a live animal market in Wuhan, China, Hubei Province
- Coronaviruses are a large family of viruses. Some cause illness in people, and others, such as canine and feline coronaviruses, only infect animals. Rarely, animal coronaviruses that infect animals have emerged to infect people and can spread between people.
- Zoological transmission is suspected to have occurred for the virus that causes COVID-19. Middle East Respiratory Syndrome (MERS) and Severe Acute Respiratory Syndrome (SARS) are two other examples of coronaviruses that originated from animals and then spread to people.
  - More information about the source and spread of COVID-19 is available on the [Spread of the Virus](#)



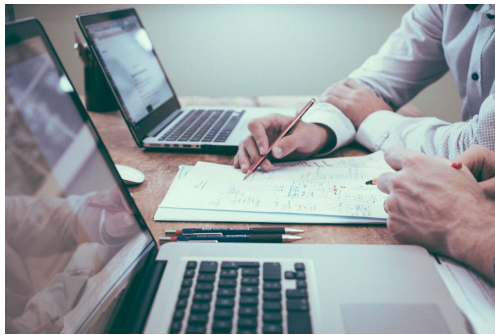
# WHAT THE HEALTH DEPARTMENT IS DOING

- TRPHD is actively monitoring individuals with recent travel history
  - These individuals will only self-isolate ***IF*** they are symptomatic or have traveled to South Korea, China, Japan, Italy, or Iran
    - Asymptomatic individuals who have not traveled to those countries will communicate temperatures and symptoms daily to Two Rivers Public Health Department
- TRPHD is in close communication with clinical providers to determine the risk of the patient involved.
  - COVID-19 testing will be approved through the Nebraska Public Health Lab if deemed appropriate by state personnel



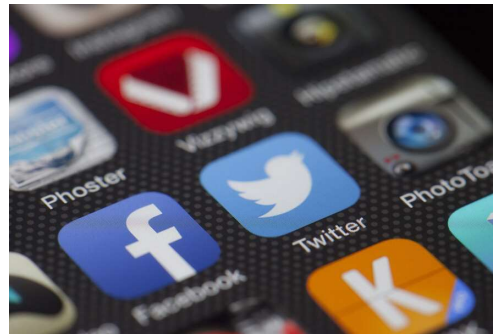


# WHAT THE HEALTH DEPARTMENT IS DOING



## PLANNING

The health departments are working to make sure that communities have plans in place to respond to any outbreak that may occur in our district (ie pandemic plans and continuity of operations plans)



## INFORMATION SHARING

Health departments use a variety of communication avenues to inform communities, partners, and stakeholders of the latest recommendations and updates



## PREPAREDNESS AND RESPONSE

Local health departments plan year around for public health emergencies. We have plans in place for multiple disaster scenarios and work with a variety of partners to ensure a coordinated response



# WHAT BUSINESSES CAN DO



## Remain Calm and Informed

This is an evolving situation, but the current risk to Nebraskans is very low. Make sure you are being updated through official resources.

Recommended Resources:

- Center for Disease Control and Prevention
- Nebraska Department of Health and Human Services
- Two Rivers Public Health Department ([www.trphd.org](http://www.trphd.org))



## Review Plans

Review and update your Pandemic and Continuity of Operations Plans.

- With the 14 day self-isolation/quarantine recommendations, how will you ensure staff stay home when appropriate? Do you have the resources to supplement their absence?
- If the outbreak spreads through the community, you will be asked to alter your business flow. Who makes that decision?



# WHAT BUSINESSES CAN DO



## Communicate

Make sure to communicate with staff, parents, and students. We battle misinformation on a daily basis, so the health department relies on business leaders to share our message.

- There is a Coronavirus Information Hotline available to the public for any questions/concerns they may have.
  - ☐ (402) 552-6645
  - ☐ Open Monday-Friday, 8:00am to 8:00pm

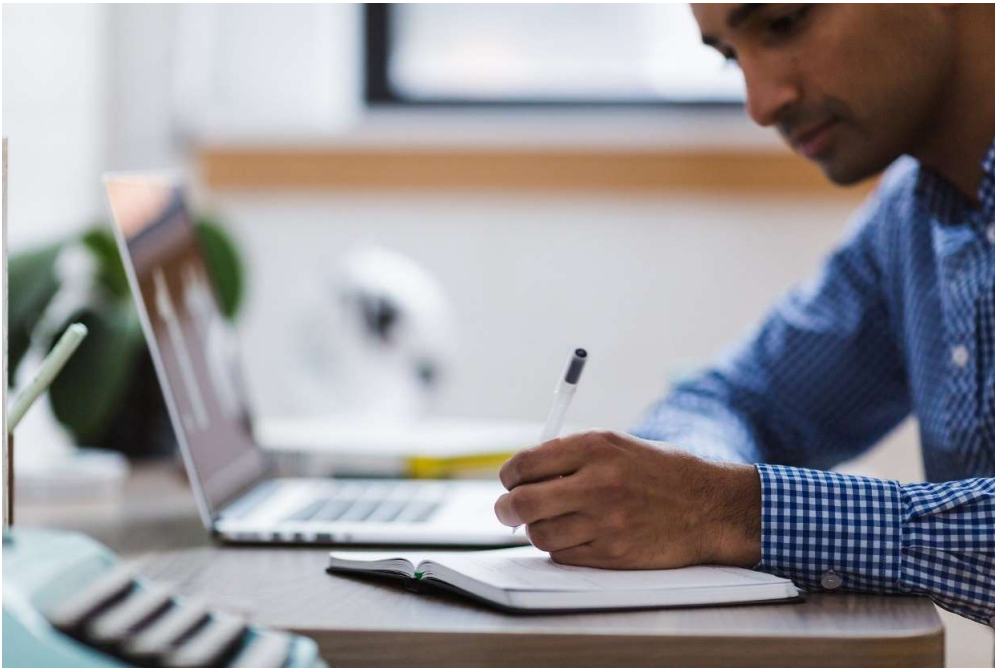


## Ask Questions

The health department is here for you. If you have any questions or obstacles you feel we could assist with, please contact us.



# Lead By Example



- Actively encourage sick employees to stay home
- Send sick employees home
- Educate employees
- Perform routine environmental cleaning
- Advise employees before traveling to take certain steps



# Recommendations for Travelers

- All returning travelers might have increased risk of exposure
  - All returning travelers, from any international or domestic location, should limit public interactions, practice strict social-distancing, and self-monitor for symptoms.
  - IF a returning traveler develops fever or respiratory illness, they need to IMMEDIATELY self-isolate and report to a provider or local health department.
  - Returning travelers need to know the COVID-19 disease burden in locations visited and traveled through. This information can be found on local/state public health and media websites.
- Areas with **widespread sustained transmission** (CDC level 3 countries plus U.S. locales such Seattle, WA, Westchester County, NY, Santa Clara County, CA) are at risk and should self-quarantine for 14 days and immediately report symptoms consistent with COVID-19 to their PCP, and consult Two Rivers.
- Local health care workers with a travel history from an area with widespread sustained transmission or other high-risk exposure should consult with a trained medical professional (e.g. infection preventionist or physician) at their facility and establish an infection control protocol (e.g. home quarantine, self-monitoring, PPE while at work etc.) that mitigates the risk of patient and co-worker exposure.



# Working together to reduce stigma

It is important to share a whole-community message and avoid prejudice behavior to Nebraskans of Asian descent or travelers returning from China or any affected areas.

Per NE DHHS, self-isolation is being warranted for travelers from international or domestic location at this time.

Find information from the CDC on reducing stigma here:

<https://www.cdc.gov/coronavirus/2019-ncov/about/related-stigma.html>



# Nebraska



- Public events and gatherings are limited to 10 people or less statewide
- Bars and restaurants will move to takeout only on a regional basis when:
  - A second community transmission case is confirmed in the Omaha area.
  - 1-2 confirmed community transmission cases in Lincoln
  - 1 confirmed community transmission case for other Nebraska communities and Nebraska's Educational Service Units.



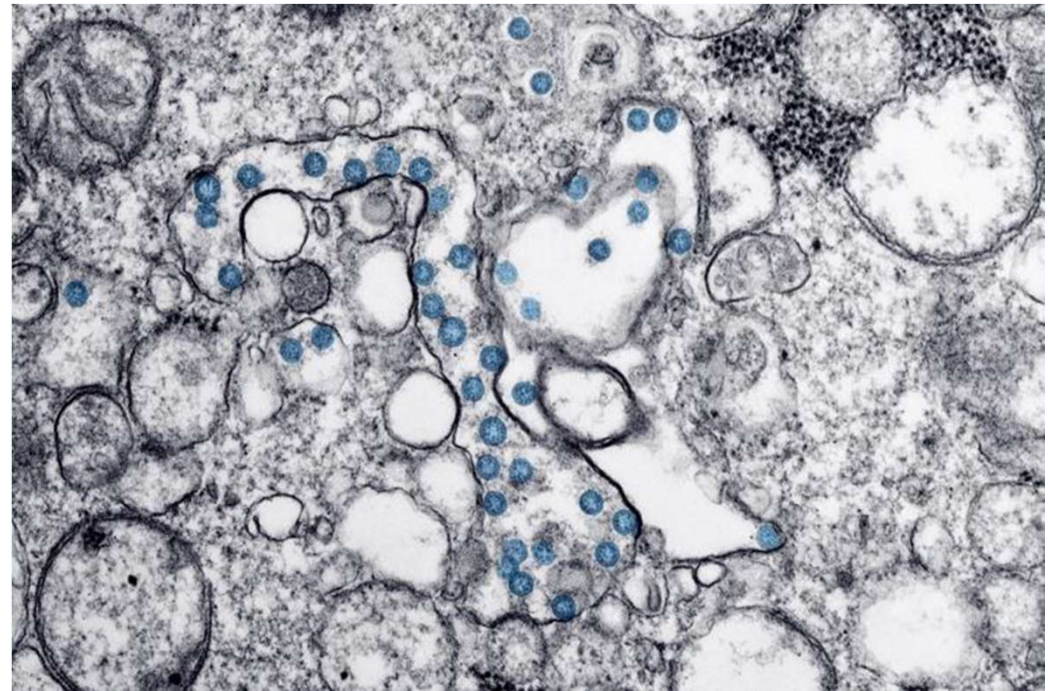
## Resources to Use

- [Guidance for K-12 Schools](#)
- [Germ Prevention Strategies](#)

[For all travelers returning to U.S. from China, South Korea, Iran, Italy, or Japan](#)

***Two Rivers Public Health Department***  
***(888)669-7154***

<https://www.trphd.org/school-resources/page.html>







Two Rivers Public Health Department  
(888) 669-7154

701 4<sup>th</sup> Avenue, Suite 1  
Holdrege, NE 68949

3715 29<sup>th</sup> Avenue, Suite A2  
Kearney, NE 68845