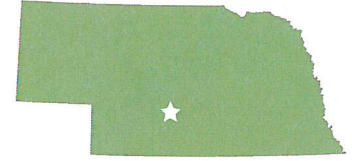


Lexington, NE | Dawson County

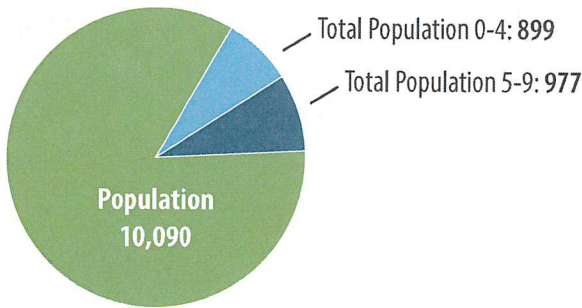
Community Conversation About Early Childhood (Birth Through Grade 3) — Programs and Services



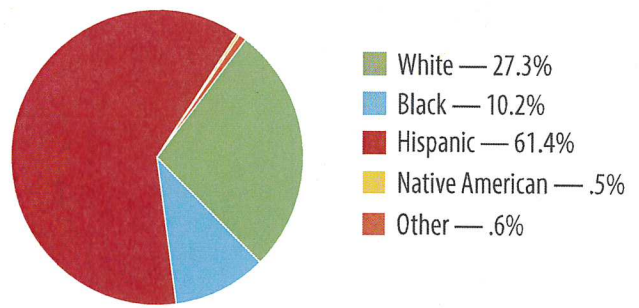
The Communities for Kids initiative was created in response to community requests for assistance with shortages of high-quality early care and education programs — shortages that both impact children’s optimal development and pose a challenge for communities hoping to attract and retain the viable workforces they need to thrive.

Communities for Kids aims to partner with communities’ public and private entities to support and coordinate planning for access to high-quality early care and education for all children birth through age eight. These partnerships will be customized to address each community’s unique assets and needs — so each community can grow and prosper well into the future.

Lexington, NE, Demographics



Other Demographics



Median Household Income



Estimated per capita income	\$18,296
Lexington Population below poverty level	20.4%
Nebraska Population below poverty level	12.7%

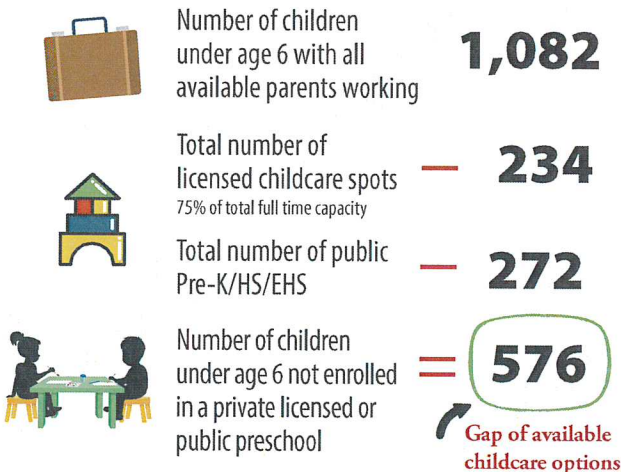
Public Early Childhood Programs

Public Pre-Kindergarten programs	240
Head Start or Early Head Start	32
Sixpence - Home-based	—
Total Center Number	272

Private Early Childhood Programs

Licensed In-home Childcare Providers (75% capacity 0-5)	21
Licensed Childcare Centers (75% capacity 0-5)	1
Licensed Preschool Providers (41 part-time spots)	2
Total Full-time Capacity	234

Quality Childcare Availability



Comparison Rates and Outcomes

	LEXINGTON PUBLIC SCHOOLS	ALL NEBRASKA
Mobility	14%	11.08%
Free/Reduced Lunch	75.7%	45%
High School Graduation Rate	89.3%	88.9%
Language Spoken Other Than English at Home	35.7%	10.8%